


State	SMC_PM_G2_ENABLE	PM_SLP_S5_L	PM_SLP_S4_L	PM_SLP_S3_L
RUN (S0)	1	1	1	1
SLEEP (S3)	1	1	1	0
DEEP SLEEP/HIBERNATE (S4)	1	1	0	0
OFF (S5)	1	0	0	0
AC POWER (G3HOT)	0	0	0	0

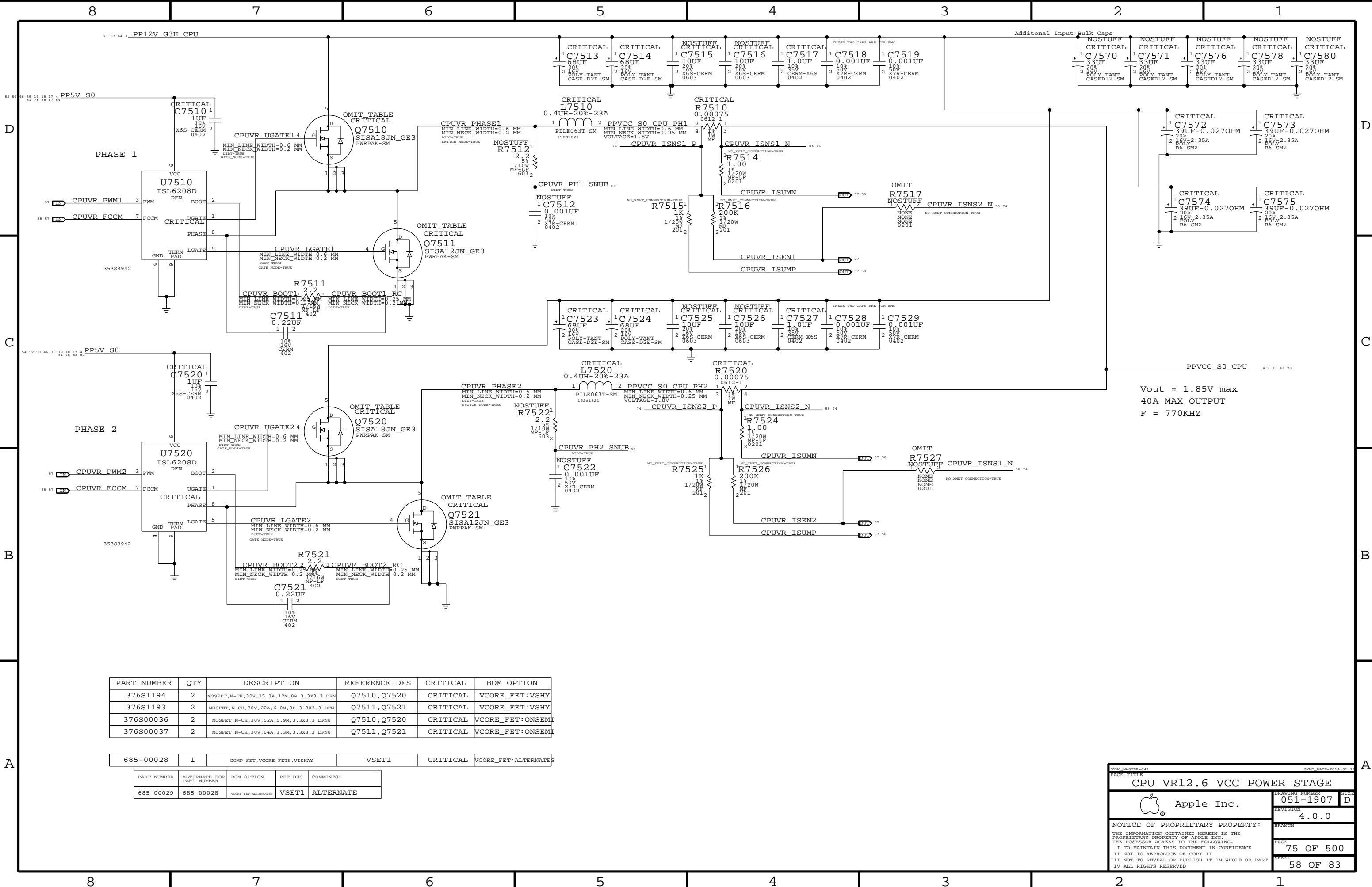
SYNC MASTER=J64_2C		SYNC DATE=2014-01-16	
PAGE TITLE			
POWER CONTROL 1: S5-S3		DRAWING NUMBER	
 Apple Inc.		051-1907	SHEET
			D
NOTICE OF PROPRIETARY PROPERTY:		REVISION	
		4.0.0	
THE INFORMATION CONTAINED HEREIN IS THE PROPRIETARY PROPERTY OF APPLE INC. THE POSSESSOR AGREES TO THE FOLLOWING:		BRANCH	
I I TO MAINTAIN THIS DOCUMENT IN CONFIDENCE		PAGE	
II NOT TO REPRODUCE OR COPY IT		68 OF 500	
III NOT TO REVEAL OR PUBLISH IT IN WHOLE OR PART			
IV ALL RIGHTS RESERVED			











PART NUMBER	QTY	DESCRIPTION	REFERENCE DES	CRITICAL	BOM OPTION
376S1194	2	MOSFET,N-CH,30V,15.3A,12M,8P 3.3X3.3 DFN	Q7510,Q7520	CRITICAL	VCORE_FET:VSHY
376S1193	2	MOSFET,N-CH,30V,22A,6.0M,8P 3.3X3.3 DFN	Q7511,Q7521	CRITICAL	VCORE_FET:VSHY
376S00036	2	MOSFET,N-CH,30V,52A,5.9M,3.3X3.3 DFN8	Q7510,Q7520	CRITICAL	VCORE_FET:ONSEM
376S00037	2	MOSFET,N-CH,30V,64A,3.3M,3.3X3.3 DFN8	Q7511,Q7521	CRITICAL	VCORE_FET:ONSEM

685-00028	1	COMP SET,VCORE FETS,VISHAY	VSET1	CRITICAL	VCORE_FET:ALTERNATES
-----------	---	----------------------------	-------	----------	----------------------

PART NUMBER	ALTERNATE FOR PART NUMBER	BOM OPTION	REF DES	COMMENTS:
685-00029	685-00028	VCORE_FET:ALTERNATES	VSET1	ALTERNATE

SYNOPSIS: CPU VR12.6 VCC POWER STAGE

Apple Inc.

75 OF 500

NOTICE OF PROPRIETARY PROPERTY:

THE INFORMATION CONTAINED HEREIN IS THE PROPRIETARY PROPERTY OF APPLE INC. THE POSSESSOR AGREES TO THE FOLLOWING:  
I TO MAINTAIN THIS DOCUMENT IN CONFIDENCE  
II NOT TO REPRODUCE OR COPY IT  
III NOT TO REVEAL OR PUBLISH IT IN WHOLE OR PART  
IV ALL RIGHTS RESERVED

DRAWING NUMBER: 051-1907

REVISION: 4.0.0

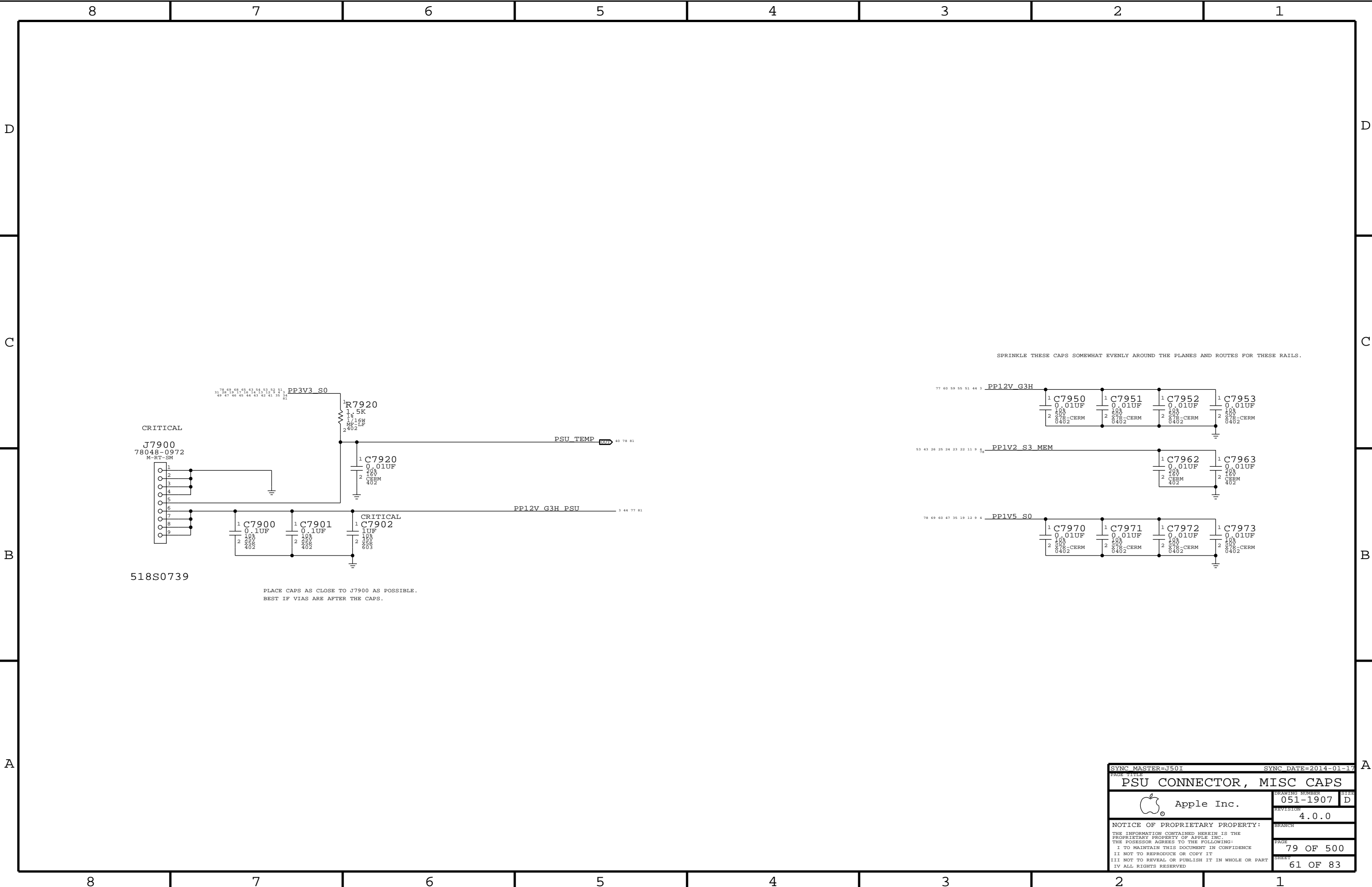
BRANCH:


PAGE: 75 OF 500

SHEET: 58 OF 83



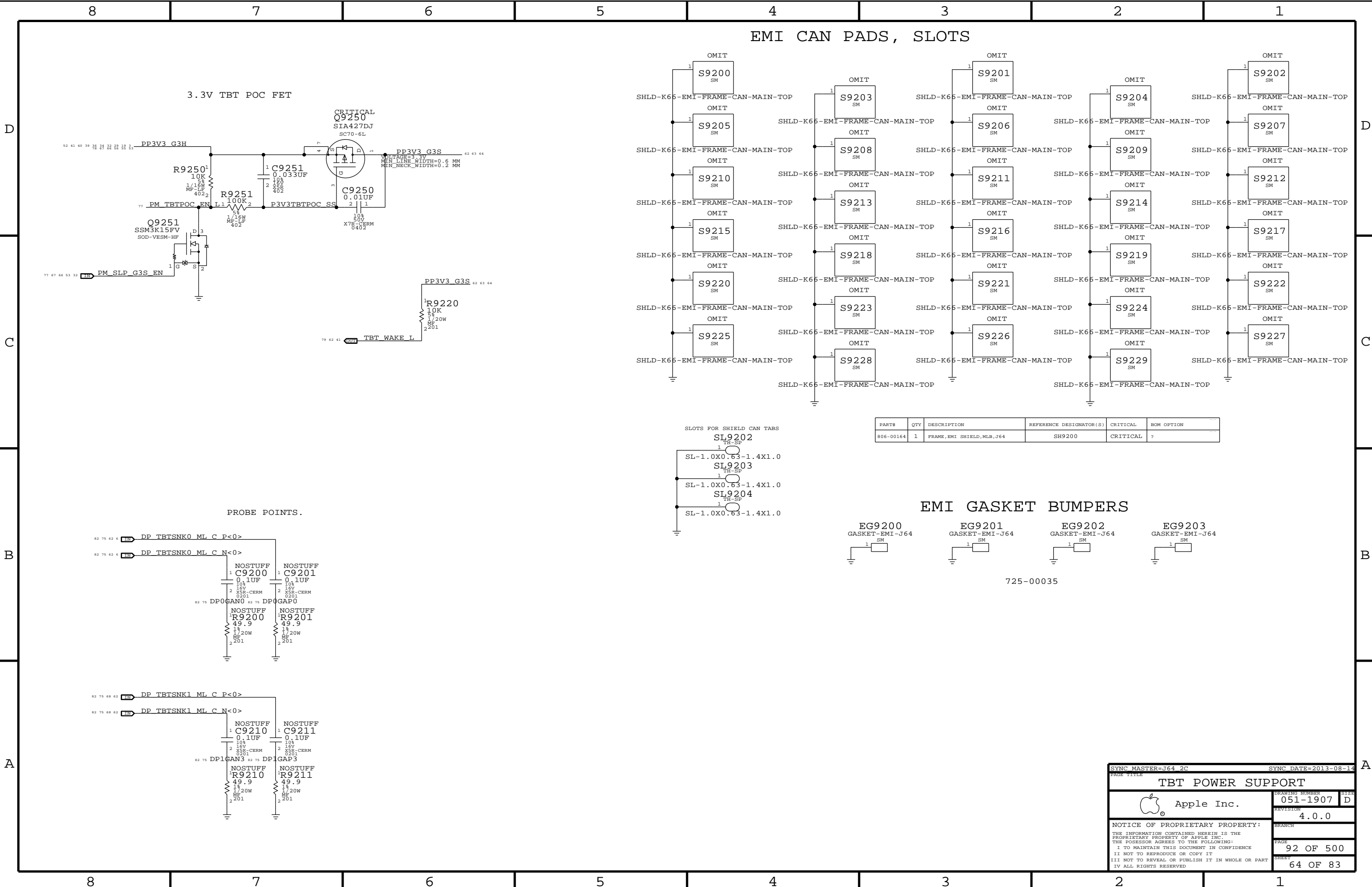




SYNC MASTER=J501		SYNC DATE=2014-01-17	
PAGE TITLE			
PSU CONNECTOR, MISC CAPS			
 Apple Inc.		DRAWING NUMBER	051-1907
		REVISION	4.0.0
NOTICE OF PROPRIETARY PROPERTY:		BRANCH	
THE INFORMATION CONTAINED HEREIN IS THE PROPRIETARY PROPERTY OF APPLE INC. THE POSSESSOR AGREES TO THE FOLLOWING:		PAGE	79 OF 500
I I TO MAINTAIN THIS DOCUMENT IN CONFIDENCE		SHEET	61 OF 83
II NOT TO REPRODUCE OR COPY IT			
III NOT TO REVEAL OR PUBLISH IT IN WHOLE OR PART			
IV ALL RIGHTS RESERVED			







3.3V TBT POC FET


EMI CAN PADS, SLOTS

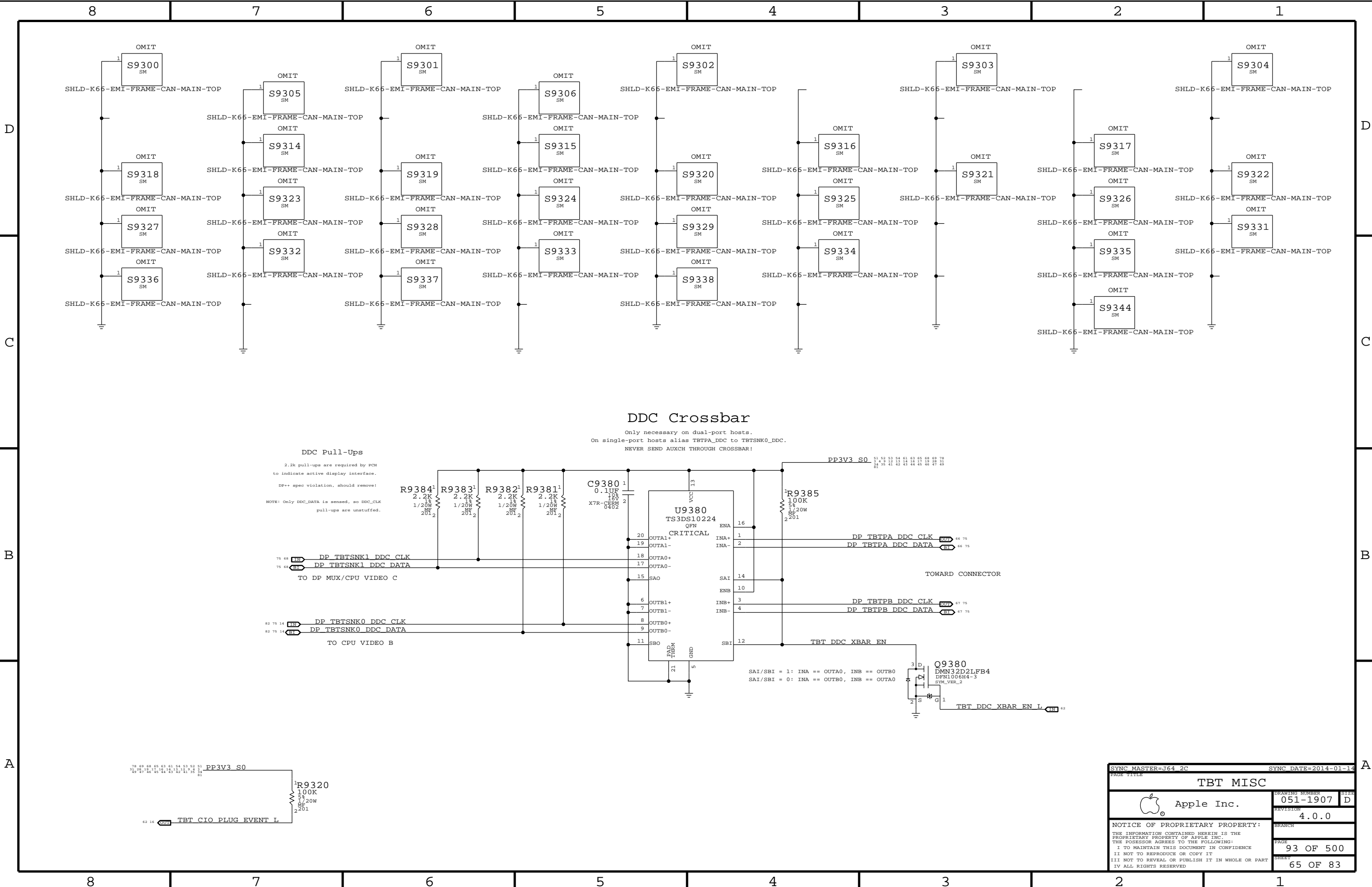
EMI GASKET BUMPERS

PROBE POINTS.

PART#	QTY	DESCRIPTION	REFERENCE DESIGNATOR(S)	CRITICAL	BOM OPTION
806-00164	1	FRAME,EMI SHIELD,MLB,J64	SH9200	CRITICAL	?

725-00035

SYNC MASTER=J64_2C		SYNC DATE=2013-08-14	
PAGE TITLE			
TBT POWER SUPPORT			
 Apple Inc.		DRAWING NUMBER	
		051-1907	
		REVISION	
		4.0.0	
NOTICE OF PROPRIETARY PROPERTY:			
THE INFORMATION CONTAINED HEREIN IS THE PROPRIETARY PROPERTY OF APPLE INC. THE POSSESSOR AGREES TO THE FOLLOWING:			
I I TO MAINTAIN THIS DOCUMENT IN CONFIDENCE			
II NOT TO REPRODUCE OR COPY IT			
III NOT TO REVEAL OR PUBLISH IT IN WHOLE OR PART			
IV ALL RIGHTS RESERVED			
		BRANCH	
		PAGE	
		92 OF 500	
		SHEET	
		64 OF 83	

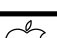


DDC Crossbar

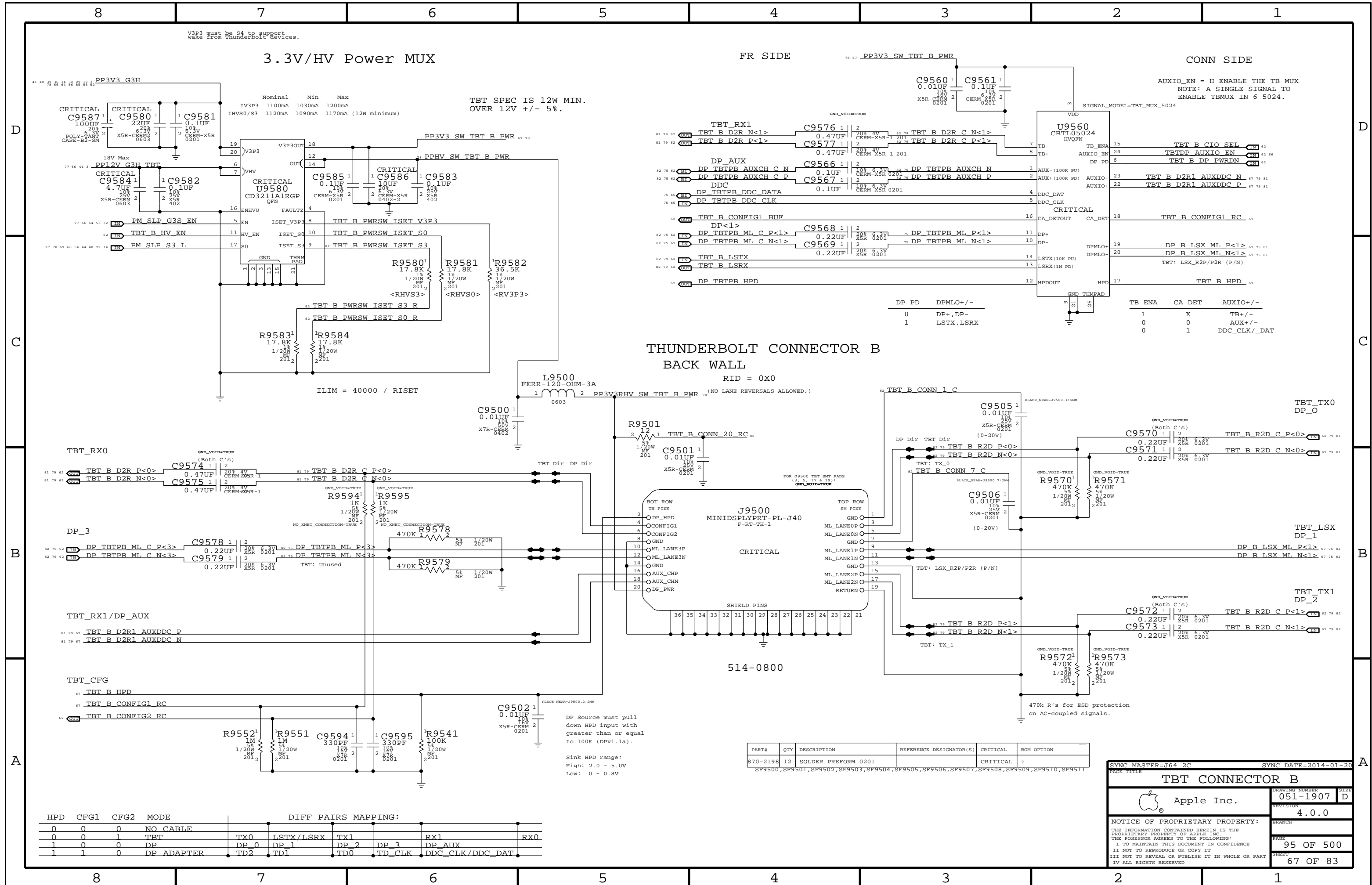
Only necessary on dual-port hosts.  
On single-port hosts alias TBTPA\_DDC to TBTSNK0\_DDC.  
NEVER SEND AUXCH THROUGH CROSSBAR!

DDC Pull-Ups

2.2k pull-ups are required by PCH  
to indicate active display interface.  
DP++ spec violation, should remove!  
NOTE: Only DDC\_DATA is sensed, so DDC\_CLK  
pull-ups are unstuffed.

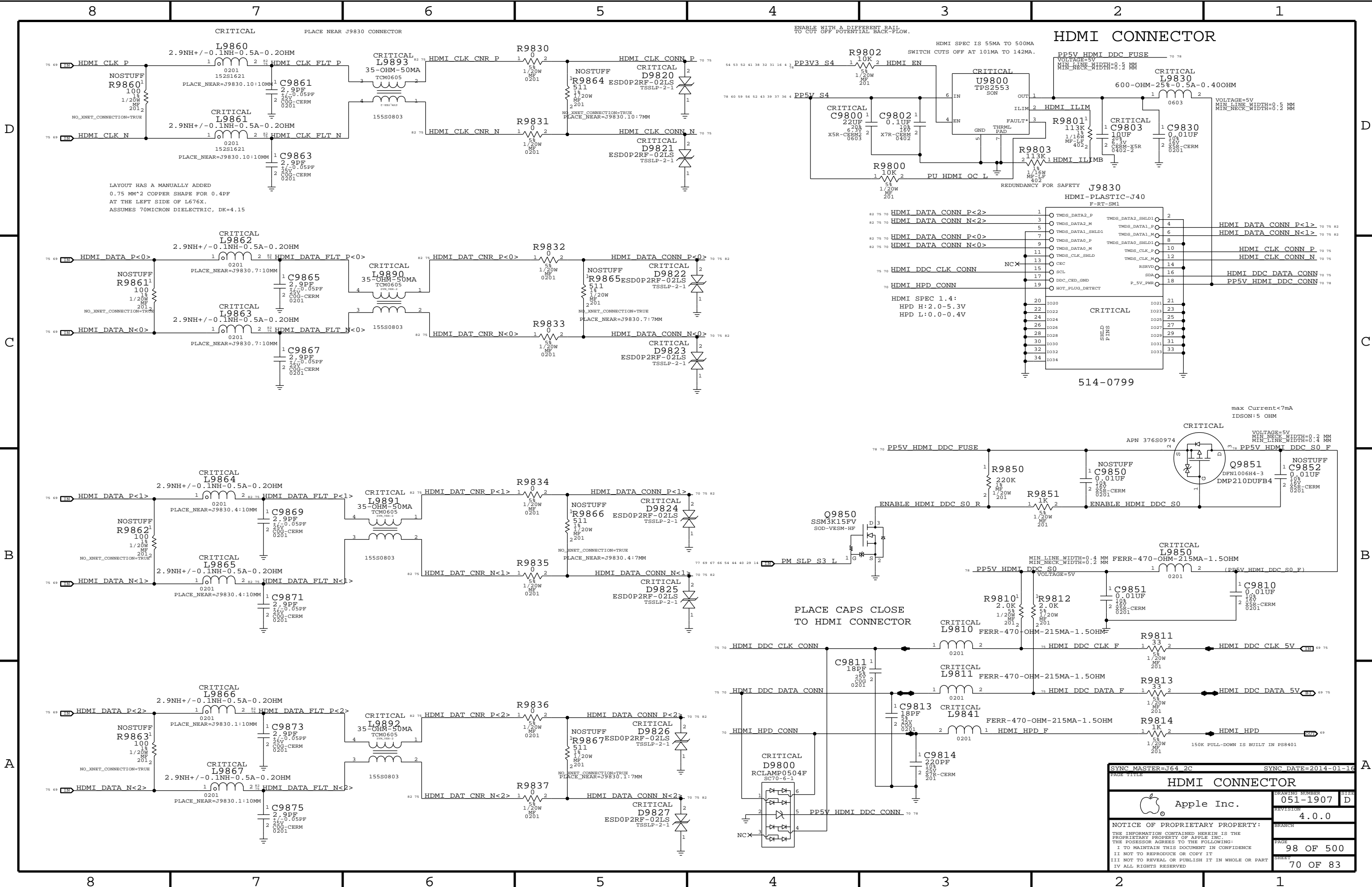
SYNC MASTER=J64 2C		SYNC DATE=2014-01-14	
PAGE TITLE			
TBT MISC			
 Apple Inc.	DRAWING NUMBER		SIZE
	051-1907		D
	REVISION		
		4.0.0	
NOTICE OF PROPRIETARY PROPERTY:		BRANCH	
THE INFORMATION CONTAINED HEREIN IS THE PROPRIETARY PROPERTY OF APPLE INC.			
THE POSSESSOR AGREES TO THE FOLLOWING:		PAGE	
I TO MAINTAIN THIS DOCUMENT IN CONFIDENCE		93 OF 500	
II NOT TO REPRODUCE OR COPY IT		SHEET	
III NOT TO REVEAL OR PUBLISH IT IN WHOLE OR PART		65 OF 83	
IV ALL RIGHTS RESERVED			

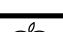






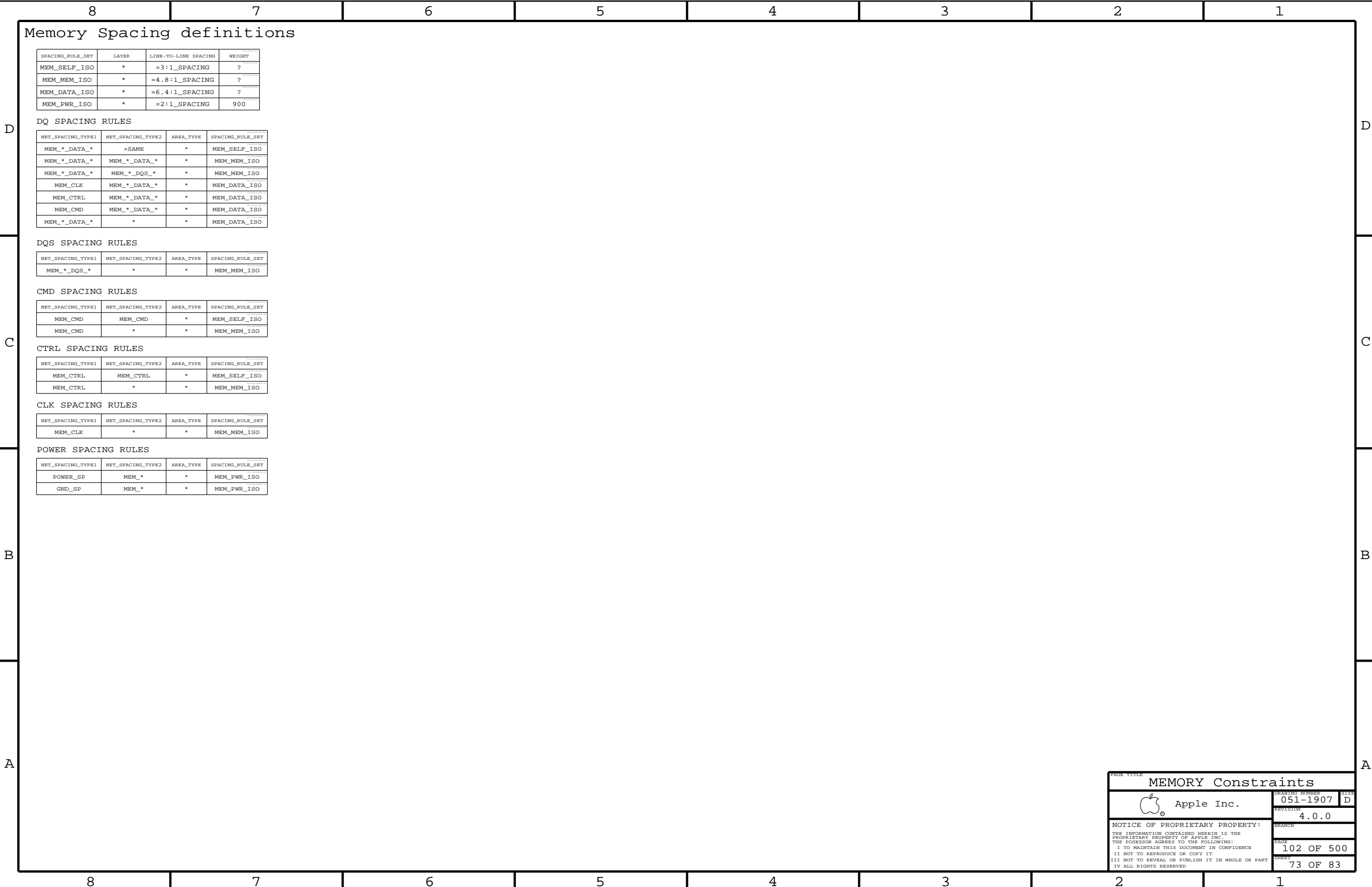




SYNC MASTER=J64 2C		SYNC DATE=2014-01-16	
PAGE TITLE			
HDMI CONNECTOR			
 Apple Inc.		DRAWING NUMBER	SHEET
		051-1907	D
		REVISION	
		4.0.0	
NOTICE OF PROPRIETARY PROPERTY:		BRANCH	
THE INFORMATION CONTAINED HEREIN IS THE PROPRIETARY PROPERTY OF APPLE INC. THE POSSESSOR AGREES TO THE FOLLOWING:		PAGE	
I I TO MAINTAIN THIS DOCUMENT IN CONFIDENCE		98	OF 500
II NOT TO REPRODUCE OR COPY IT		SHEET	
III NOT TO REVEAL OR PUBLISH IT IN WHOLE OR PART		70	OF 83
IV ALL RIGHTS RESERVED			















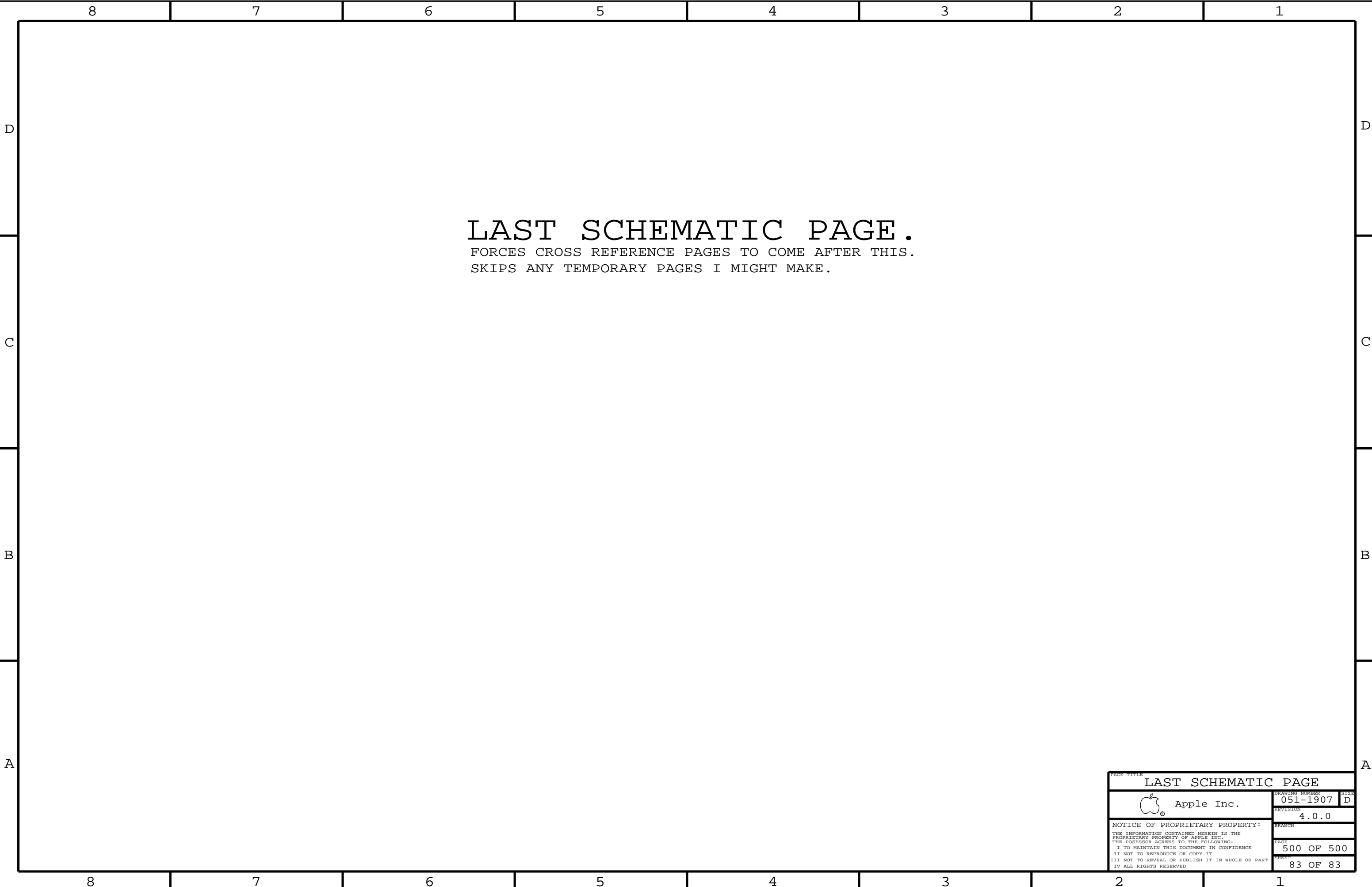













# LAST SCHEMATIC PAGE.

FORCES CROSS REFERENCE PAGES TO COME AFTER THIS.  
SKIPS ANY TEMPORARY PAGES I MIGHT MAKE.

PAGE TITLE		
LAST SCHEMATIC PAGE		
 Apple Inc.	DRAWING NUMBER	051-1907
	REVISION	4.0.0
NOTICE OF PROPRIETARY PROPERTY: THE INFORMATION CONTAINED HEREIN IS THE PROPRIETARY PROPERTY OF APPLE INC. THE POSSESSOR AGREES TO THE FOLLOWING: I TO MAINTAIN THIS DOCUMENT IN CONFIDENCE II NOT TO REPRODUCE OR COPY IT III NOT TO REVEAL OR PUBLISH IT IN WHOLE OR PART IV ALL RIGHTS RESERVED	BRANCH	
	PAGE	500 OF 500
	SHEET	83 OF 83